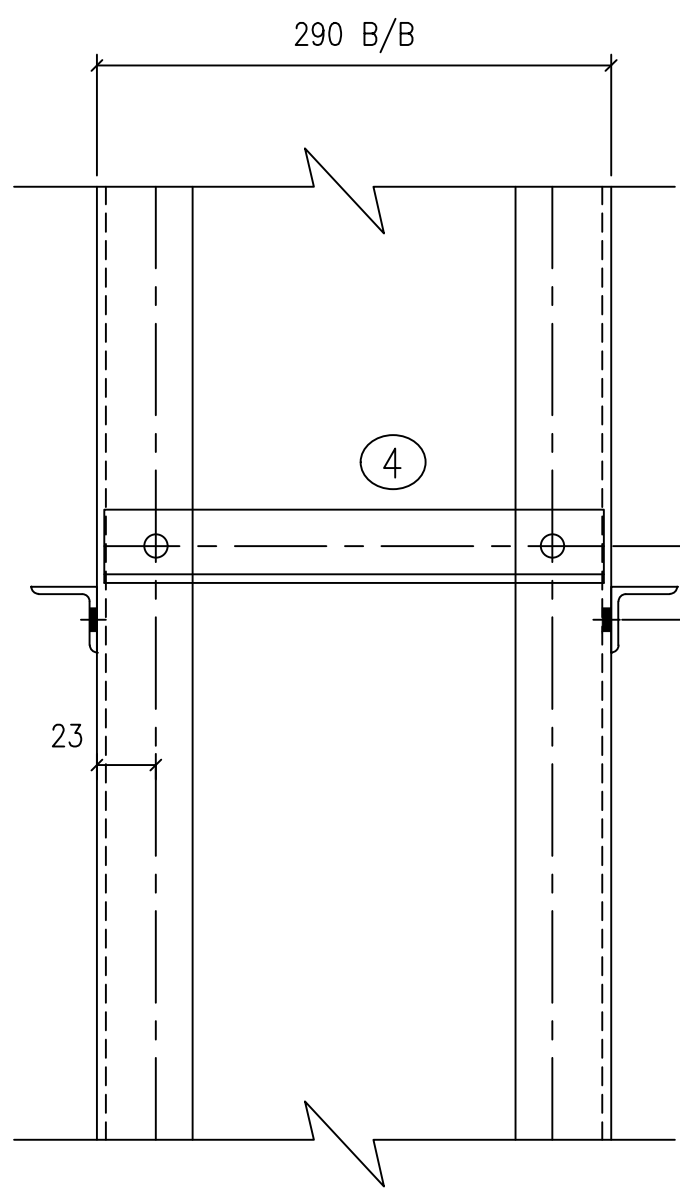
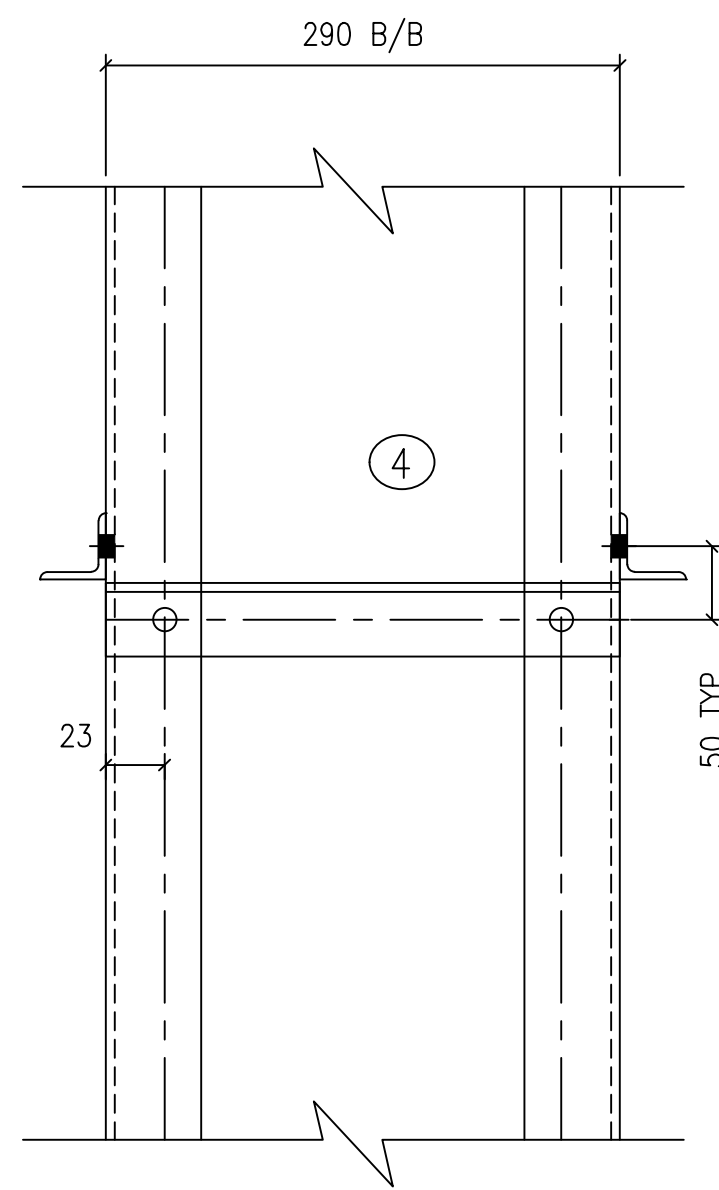


ELEVATION

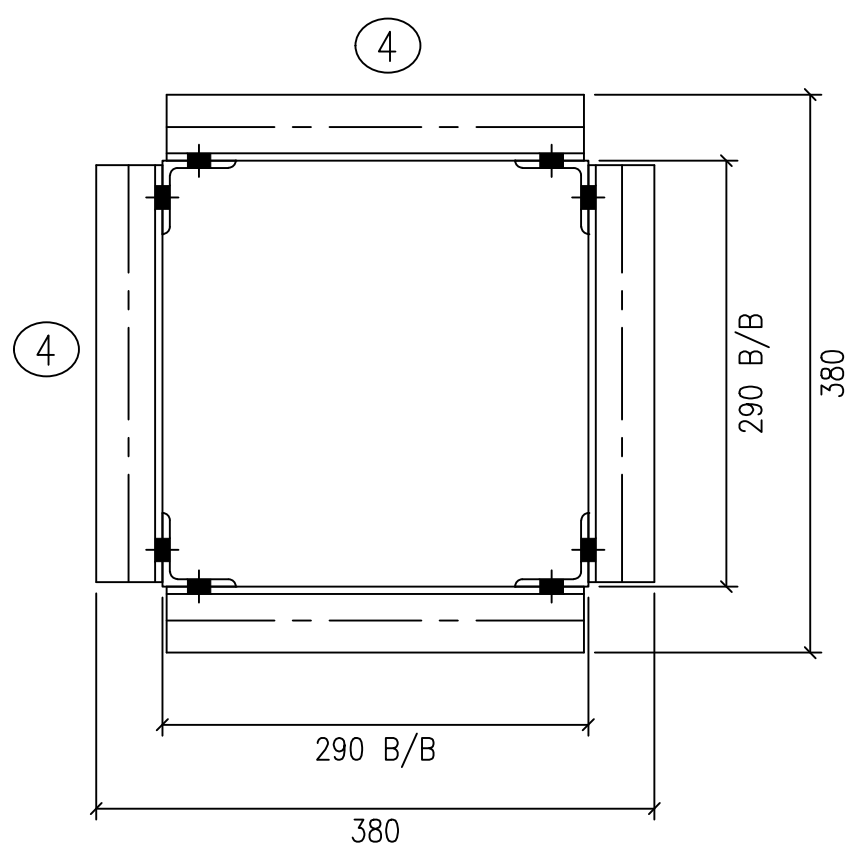


DETAIL AT-A

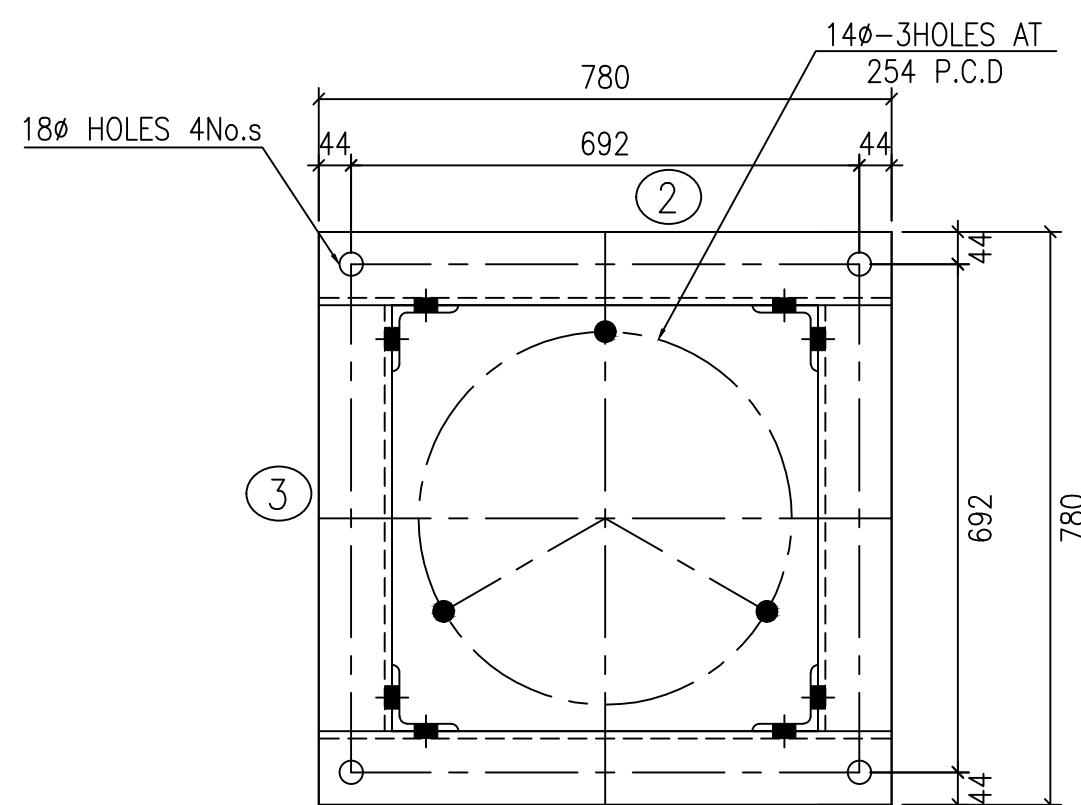
VIEW-B



VIEW-B



DETAIL OF BASE



SECTION X-X

BILL OF MATERIAL

ITEM NO.	SECTION DESCRIPTION	QTY	Unit Wt.	WEIGHT
LA-1	ISA-45X45X5-4071 mm	2	3.40	27.68
LA-1X	ISA-45X45X5-4071 mm	2	3.40	27.68
LA-2	ISA-50X50X6-390 mm	2	4.50	3.51
LA-3	ISA-50X50X6-290 mm	2	4.50	2.61
LA-4	ISA-45X45X5-290 mm	36	3.40	35.50
LA-5	PLT-390X390X6 mm	1	7.16	7.16
TOTAL WEIGHT IN KGS.				104.50

LIST OF BOLTS & NUTS

DESCRIPTION OF BOLT	QTY	Unit Wt.	Wt.
M16 BOLT X 35 mm LG	77	0.124	9.55
M12 BOLT X 40 mm LG	3	0.132	0.40
3.5 TH.SP.WASHER FOR 16Ø BOLT	77	0.009	0.693
3.5 TH.SP.WASHER FOR 12Ø BOLT	3	0.009	0.027
TOTAL WEIGHT		10.67	

NOTES:

1. ALL DIMENSIONS ARE IN MM.
2. ALL HOLES ARE 17.5MM DIA. FOR 16MM DIA. BOLTS.
3. ALL STEEL SECTIONS SHALL CONFIRM TO IS: 2062.
4. ALL STEEL SECTIONS, BOLTS, NUTS & PACK WASHERS ARE TO BE HOT DIP GALVANIZED.
5. ALL BOLTS SHALL CONFORM TO IS:12427(2001), WITH MECHANICAL PROPERTIES CLASS 5.6 AND NUTS SHALL CONFORM TO IS: 1367(PART-VI) OF PROPERTIES CLASS-5.
6. DIMENSIONAL AND WEIGHT TOLERANCE  $\pm 10\%$ .
7. THE HEIGHT OF STRUCTURE SHALL BE ADJUSTED TO MATCH WITH LIVE POINT HEIGHT (LPH) AS PER APPROVED SECTIONAL DRAWING.
8. THE EQUIPMENT MOUNTING DETAILS SHALL BE MATCHED WITH APPROVED EQUIPMENT DRAWINGS.

Approval Ltr No.: CEE/P&C/SET/EE(TL)/AEE-9/2021-22/10039-49 Dtd:05.10.2021

KPTCL/P&C/TECH/110KV/LA

AEE

EE

SEE

CEE

EQUIPMENT MOUNTING STRUCTURE FOR  
110KV LA  
(FOR 110/11KV SUBSTATIONS ONLY)

